

MODIFICATION RECOMMENDED

1130A-01A

# S E R V I C E N O T E

Supersedes:  
1130A-01

## 1130A Infiniimax Probe Amplifier 1.5GHz

Serial Numbers: US00000000 up to US49491010

**Possible fractured solder joint on input pin**

**Parts Required:**

P/N	Description	Qty.
01130-68701	Probe Amplifier	1

## ADMINISTRATIVE INFORMATION

SERVICE NOTE CLASSIFICATION:			
<b>MODIFICATION RECOMMENDED</b>			
ACTION CATEGORY:	X ON SPECIFIED FAILURE [ ] AGREEABLE TIME	STANDARDS LABOR: 1.0 Hours	
LOCATION CATEGORY:	[ ] CUSTOMER INSTALLABLE [ ] ON-SITE X SERVICE CENTER [ ] CHANNEL PARTNER	SERVICE INVENTORY: [ ] RETURN [ ] SCRAP [ ] SEE TEXT	USED PARTS: [ ] RETURN [ ] SCRAP [ ] SEE TEXT
AVAILABILITY:	PRODUCT'S SUPPORT LIFE		
NO CHARGE AVAILABLE UNTIL:		End of product support life	
AUTHOR: KO		PRODUCT LINE: 1A	
ADDITIONAL INFORMATION:			

© AGILENT TECHNOLOGIES, INC. 2011  
PRINTED IN U.S.A.

March 24, 2011

Rev. 18



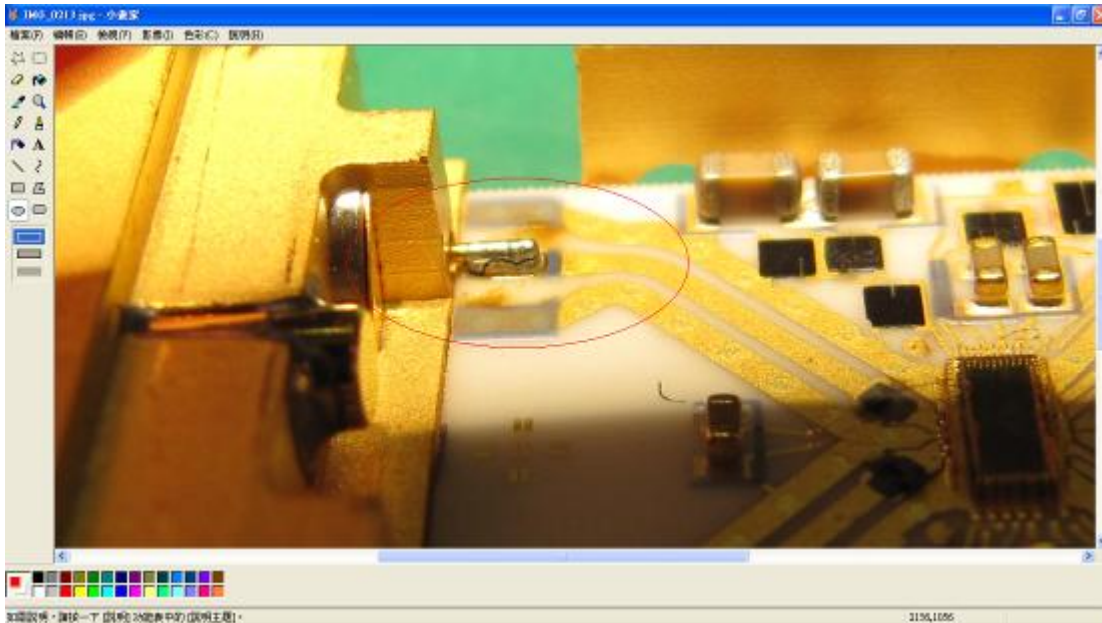
**Situation:**

There is a possibility that the input pin solder joint may be fractured. You may also find the input pin bent, broken off, or stuck into the female connector of a probe head.

**Solution/Action:**

Determine that the probe is defective. If the probe is not defective, do not continue. The below steps will damage a good probe.

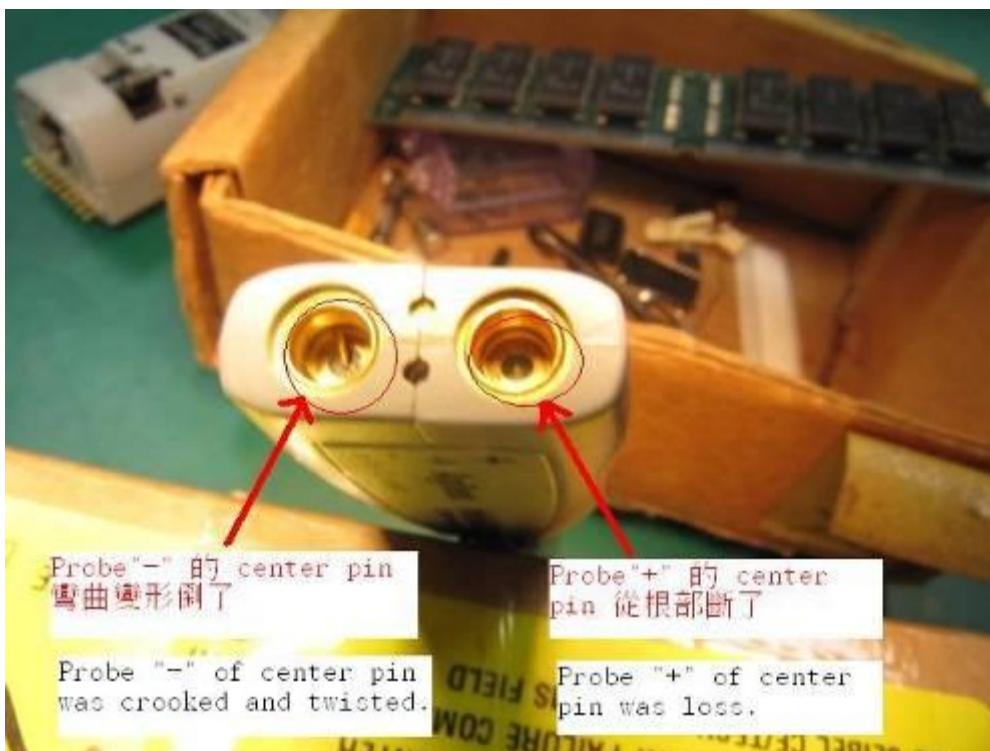
1. Remove the labels from the top and bottom of the probe.
2. Pry the two halves apart.
3. Pry the metal shield from top of the probe.
4. Use a microscope or magnifying glass to inspect the two input pins for a fractured solder joint. If you cannot see the fractured solder joint, you can use a tweezers to gently and very slightly move the pin sticking out from the male end of the probe amplifier. Any fracture should become more visible with very slight pin movement. If you force the pin enough, you can fracture any solder joint.



The above picture shows a fractured solder joint.



The above picture shows where the long pin of the probe amplifier actually got stuck in the female connector of the probe head. When the probe head was removed from the probe amp, part of the probe head female connector stuck to the probe amplifier pin and was pulled out.



The above picture shows a bent male pin and a broken male pin. The longer male pin could cause the pin to bend or eventually break when connected to a probe head.

5. If you determine that the solder joint is fractured, bent, broken, or probe head parts stuck to a probe pin, replace with a new 01130-68701 probe amplifier. Charge the replacement cost to factory warranty.

If you find the above mechanical defects, replace with a new 01130-68701 probe amplifier.

If the probe amplifier has a different failure that is not mechanical but is under warranty, replace using your normal warranty process.

If the probe amplifier has a different failure that is not mechanical and is not under warranty, inform the customer that the probe cannot be repaired and a new 1130A probe must be purchased.

All mechanical problems were fixed on probe amplifiers with a serial number of US4941011 and higher. Treat any failures as you normally would by using Agilent warranty policy.