

MODIFICATION RECOMMENDED –  
CORRECTS MANUFACTURING OR DESIGN DEFECTS

**E3631A-09B**

# **S E R V I C E                      N O T E**

Supersedes: E3631A-09A

## **E3631A DC Power Supply**

Serial Numbers: **KR00000001 through KR99999999, MY40000001 through MY40023860, SG40000001 through SG40015088**

### **On +6V output unit shows current draw without load**

**To Be Performed By: Agilent-Qualified Personnel or Customer**

#### **Parts Required:**

<b>Part number:</b>	<b>Quantity</b>
1826-2420	2
1853-0590	2

## **ADMINISTRATIVE INFORMATION**

SERVICE NOTE CLASSIFICATION:			
<b>MODIFICATION RECOMMENDED</b>			
ACTION CATEGORY:	<input type="checkbox"/> IMMEDIATELY <input checked="" type="checkbox"/> ON SPECIFIED FAILURE <input type="checkbox"/> AGREEABLE TIME	STANDARDS: LABOR: 0.2 Hours	
LOCATION CATEGORY:	<input type="checkbox"/> CUSTOMER INSTALLABLE <input type="checkbox"/> ON-SITE <input checked="" type="checkbox"/> SERVICE CENTER	SERVICE INVENTORY: <input type="checkbox"/> RETURN <input type="checkbox"/> SCRAP <input checked="" type="checkbox"/> SEE TEXT	USED PARTS: <input type="checkbox"/> RETURN <input type="checkbox"/> SCRAP <input checked="" type="checkbox"/> SEE TEXT
AVAILABILITY:	PRODUCT'S SUPPORT LIFE	AGILENT RESPONSIBLE UNTIL: Always	
AUTHOR: [initials]                      PRODUCT LINE: WC ADDITIONAL INFORMATION: Perform quick verification if unit fails, return to factory if unresolved.			

© AGILENT TECHNOLOGIES, INC. 2006  
PRINTED IN U.S.A.



July 24, 2006

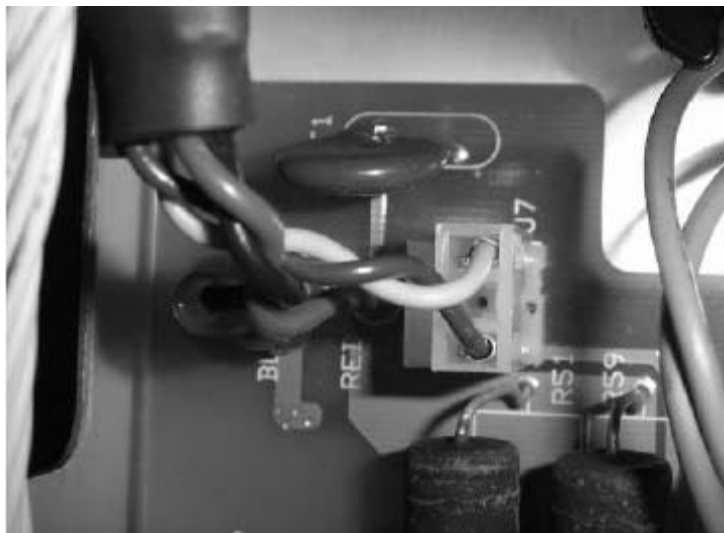
**Situation:**

On +6V output, the power supply shows current draw even though there is no load being connected.

**Verification/Action:**

1. Solder the yellow and blue wires directly to J7 (part number: 1252-2786) on the E3631-60004 (Bottom PCA Board). Below pictures are showing the changes being performed.

Before – Yellow and Blue wires are connected to PCB with a connector jack.

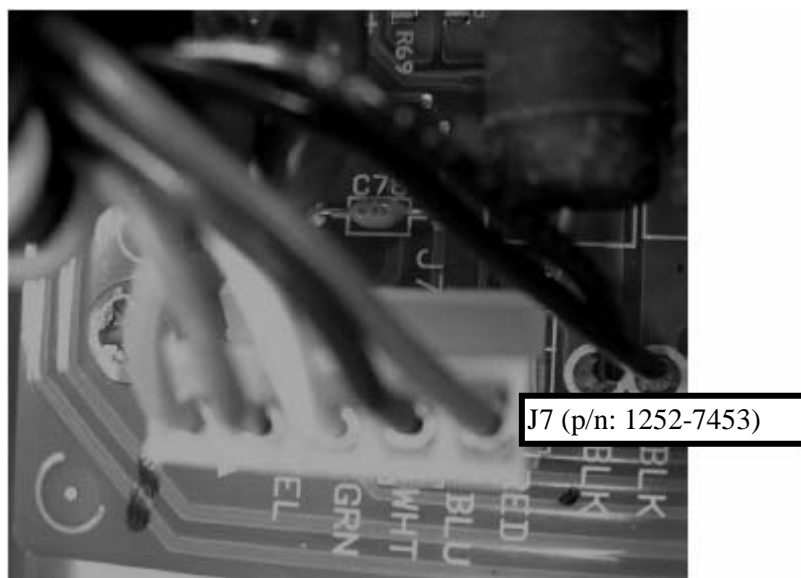


Solution – Yellow and Blue wires are soldered directly to J7.

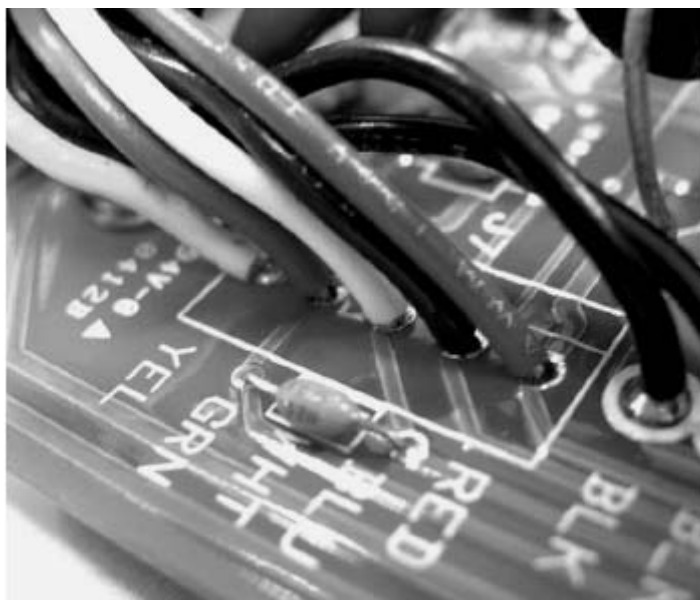


2. Remove J7 (part number 1252-7453) and solder the wires directly onto the PCB according to the colors indicated on the E3631-60002 (Top PCA Board).

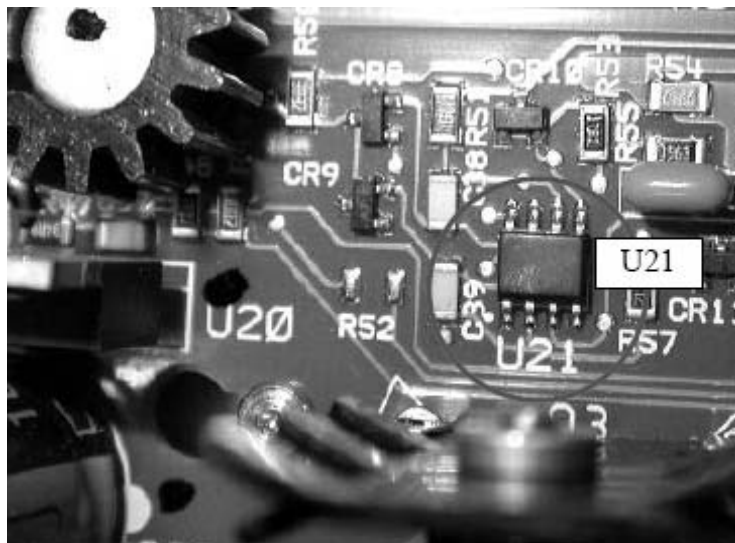
Before – All 5 wires are connected to PCB within a connector jack.



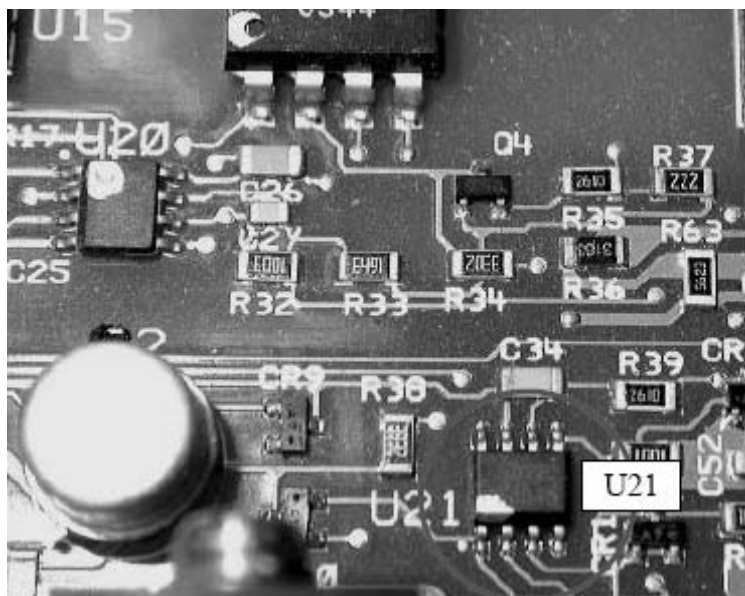
Solution – All 5 wires are soldered directly to PCB board according to the indicated colors.



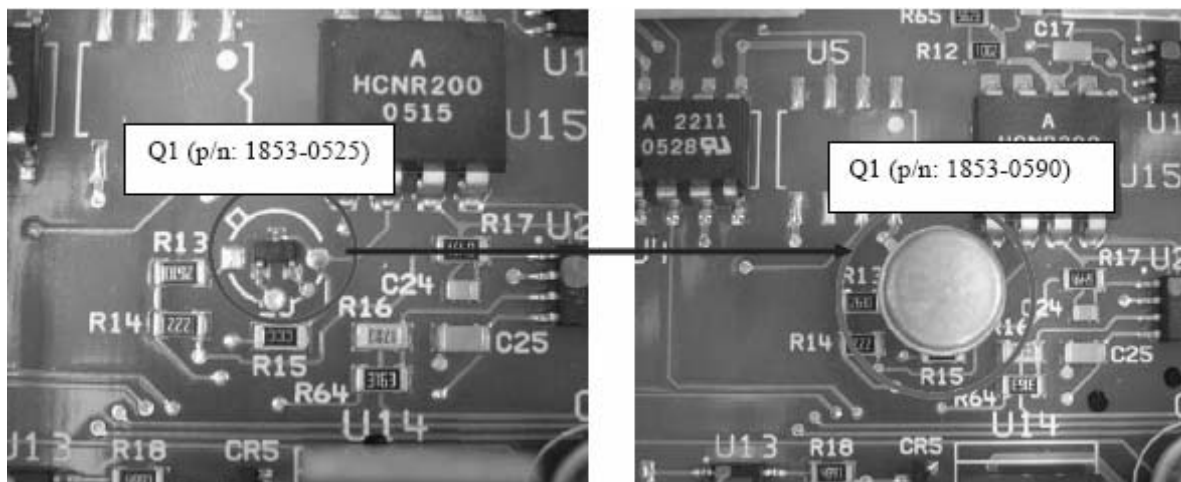
3. Change the U21 from part number 1826-1862 to part number 1826-2420 on E3631-60002 (Top PCA Board)



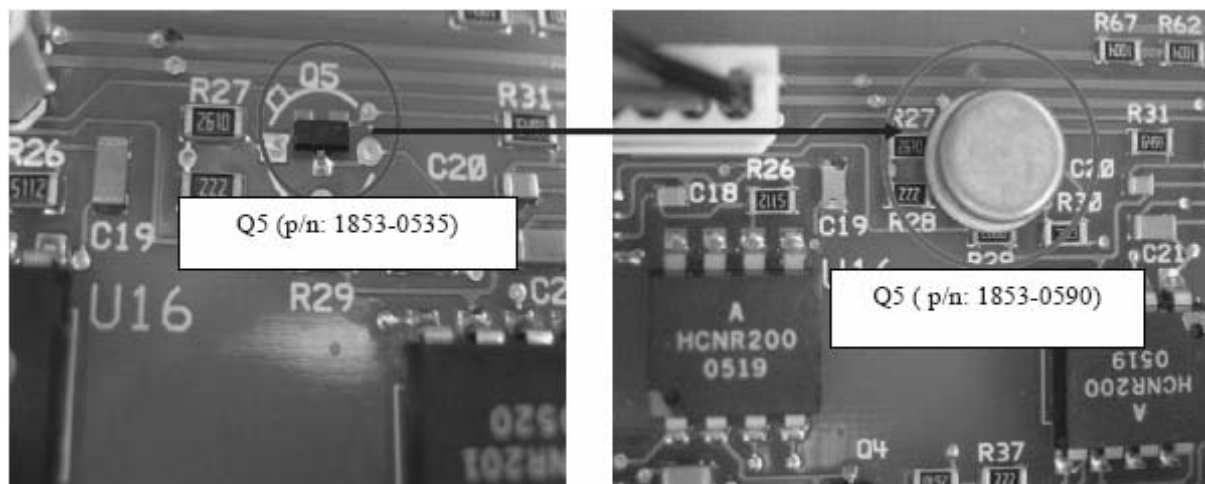
4. Change the U21 from part number 1826-1862 to part number 1826-2420 on E3631-60004 (Bottom PCA Board)



5. Change transistor Q1 from part number 1853-0525 to 1853-0590 on E3631-60004 (Bottom PCA Board).



6. Change transistor Q5 from part number 1853-0525 to 1853-0590 on E3631-60004 (Bottom PCA Board).



7. Recalibrate the unit after all the above changes are applied.