

E5070A-08A**S E R V I C E****N O T E**Supersedes:
E5070A-08**E5070A ENA Series Network Analyzer, 300 kHz to 3 GHz****Serial Numbers: JP1KJ00001 to JP1KJ99999****When E5070A has the step attenuator (33321-60059) and fails Internal Test at Step Attenuator test group, replace the old step attenuator with the improved version (33321-60069) and the revised A86 (E5070-65086).****To Be Performed By: Agilent-Qualified Personnel or Customer****Parts Required:**

P/N	Description	Qty.
33321-60069	ATTENUATOR PROGRAMMABLE 35DB 12G	1
E5070-65086	SVC, A86 BOARD	1

ADMINISTRATIVE INFORMATION

SERVICE NOTE CLASSIFICATION:			
MODIFICATION RECOMMENDED			
ACTION CATEGORY:	<input type="checkbox"/> IMMEDIATELY <input checked="" type="checkbox"/> ON SPECIFIED FAILURE : <input type="checkbox"/> AGREEABLE TIME	STANDARDS LABOR: 3.0 Hours	
LOCATION CATEGORY:	<input type="checkbox"/> CUSTOMER INSTALLABLE <input type="checkbox"/> ON-SITE <input checked="" type="checkbox"/> SERVICE CENTER	SERVICE INVENTORY: <input type="checkbox"/> RETURN <input type="checkbox"/> SCRAP <input type="checkbox"/> SEE TEXT	USED PARTS: <input type="checkbox"/> RETURN <input checked="" type="checkbox"/> SCRAP <input type="checkbox"/> SEE TEXT
AVAILABILITY:	PRODUCT'S SUPPORT LIFE		
NO CHARGE AVAILABLE UNTIL: October 2008			
AUTHOR: jm		PRODUCT LINE: WN	
ADDITIONAL INFORMATION:			

© AGILENT TECHNOLOGIES, INC. 2008
PRINTED IN U.S.A.

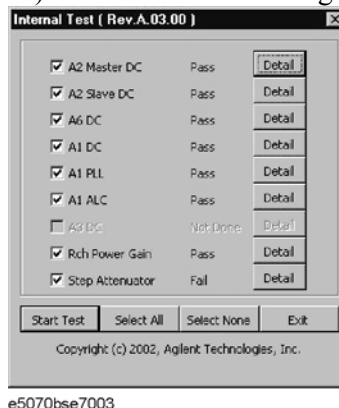
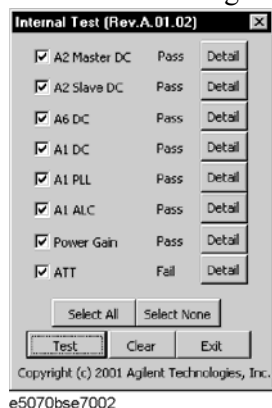
March 6, 2008

Page 1 of 2

Situation:

Internal Test dialog box (rev.A01.02 or earlier)

Internal Test dialog box (rev.A03.00 or later)



Internal Test is failed on Step Attenuator Test Group, due to the old attenuator reliability.

Solution/Action:

When the attenuator (33321-60059) is defective, replace with the new replacement attenuator (33321-60069, not 33321-60068) and replace A86 (E5070-66586) with revised one (E5070-65086). There is no need to upgrade firmware for this replacement.

Parts Required

P/N	Description	Qty.
33321-60069	ATTENUATOR PROGRAMMABLE 35DB 12G	1
E5070-65086	SVC, A86 BOARD	1

In case E5070-65086 can not be fixed in to the chassis, due to the hole figure difference, replace the chassis and the plate with the new one.

E5070-60031	Chassis	1
E5070-01251	Plate	1

Caution: 33321-60069 for E507xA, 33321-60068 can not be used up to E507xA. 33321-60068 is for E507xB.

Detail procedure:

1. Do hardware modification.
2. Do adjustment program
3. Do Internal Test and External Test
4. Do performance test

Retrofit Time:

Assembly Time: 1.5 hour
 Adjustment Time: 0.5 hour
 Performance Test Time: 1.0 hour

 Total Time: 3.0 hours