

E5080B-01A

Modification Recommended Service Note

Supersedes:
E5080B-01

E5080B ENA Series Vector Network Analyzer

Serial Numbers: MY59100003 – MY59100217

Manufacturing ID Number: N/A

E5080B LVDS Cable Installation Enhancement

Parts Required:

| P/N | Description | Qty. |
|-------------|---------------------|------|
| 1400-0249 | Cable-tie | 2 |
| E5080-61616 | LVDS Cable Assembly | 1 |

ADMINISTRATIVE INFORMATION

| | | | |
|---------------|---|----------------------------|-----------------------------------|
| ACTION | <input type="checkbox"/> ON SPECIFIED FAILURE | STANDARDS | |
| CATEGORY: | <input checked="" type="checkbox"/> AGREEABLE TIME | LABOR: | 0.5 Hours |
| LOCATION | <input type="checkbox"/> CUSTOMER INSTALLABLE | SERVICE: | <input type="checkbox"/> RETURN |
| CATEGORY: | <input type="checkbox"/> ON-SITE (active On-site contract required) | INVENTORY: | <input type="checkbox"/> SCRAP |
| | <input checked="" type="checkbox"/> SERVICE CENTER | | <input type="checkbox"/> SEE TEXT |
| | <input type="checkbox"/> CHANNEL PARTNERS | | <input type="checkbox"/> SEE TEXT |
| AVAILABILITY: | PRODUCT'S SUPPORT LIFE | NO CHARGE AVAILABLE UNTIL: | 1-Oct-2021 |
| | <input type="checkbox"/> Calibration Required | PRODUCT LINE: | WN |
| | <input checked="" type="checkbox"/> Calibration NOT Required | AUTHOR: | ls |

ADDITIONAL INFORMATION:

To be performed by: Keysight Technologies service center and RSD - especially when CPU is replaced.

It is a workmanship induced (on cable assembly installation) issue rather part reliability related. Replace the LVDS cable.

Situation:

In some unlikely situation, the LVDS cable connector will become loosen when it is subjected to heavy vibration or external shock. As a result, E5080B will switch on without internal display and with continuous beep.

It is a workmanship induced (on cable assembly installation) issue rather part reliability related.

Replace the original E5080-61606 LVDS cable assembly with E5080-61616 of improvised design.

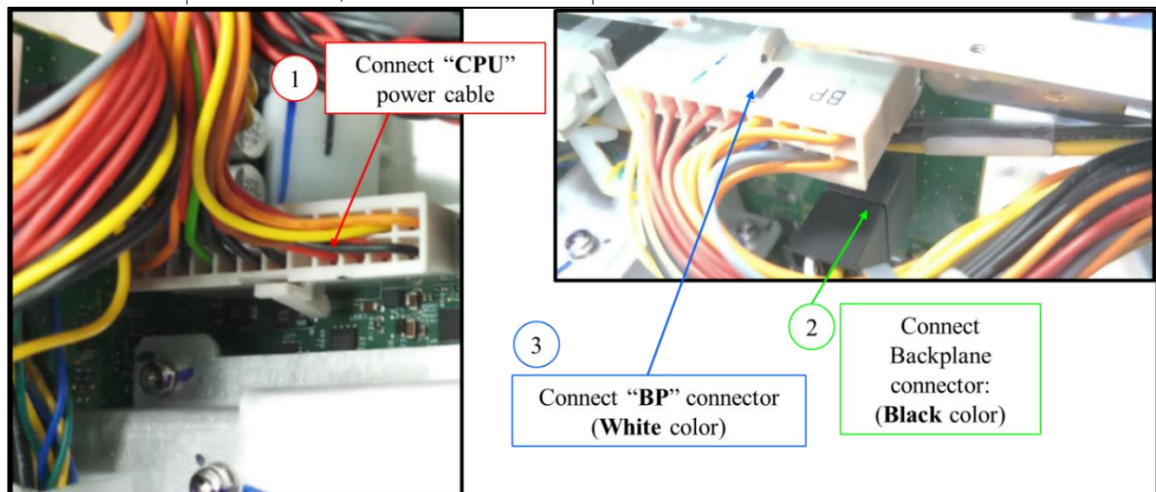
Make use of the cable tie (Keysight PN 1400-0249) to secure the cables assemblies in place.

This is especially important when CPU module is replaced.

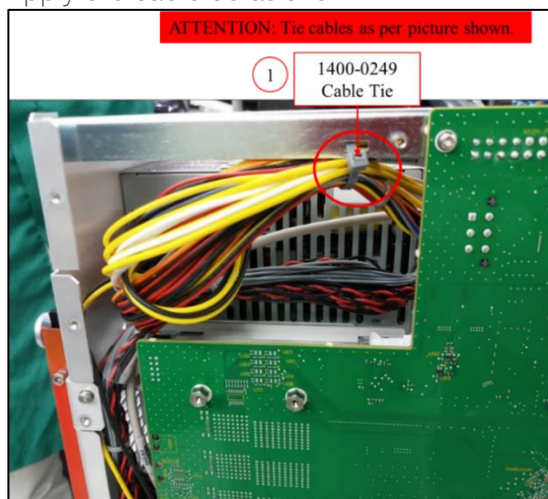
Solution/Action:

Refer to the following connection sequence in the correct orders.

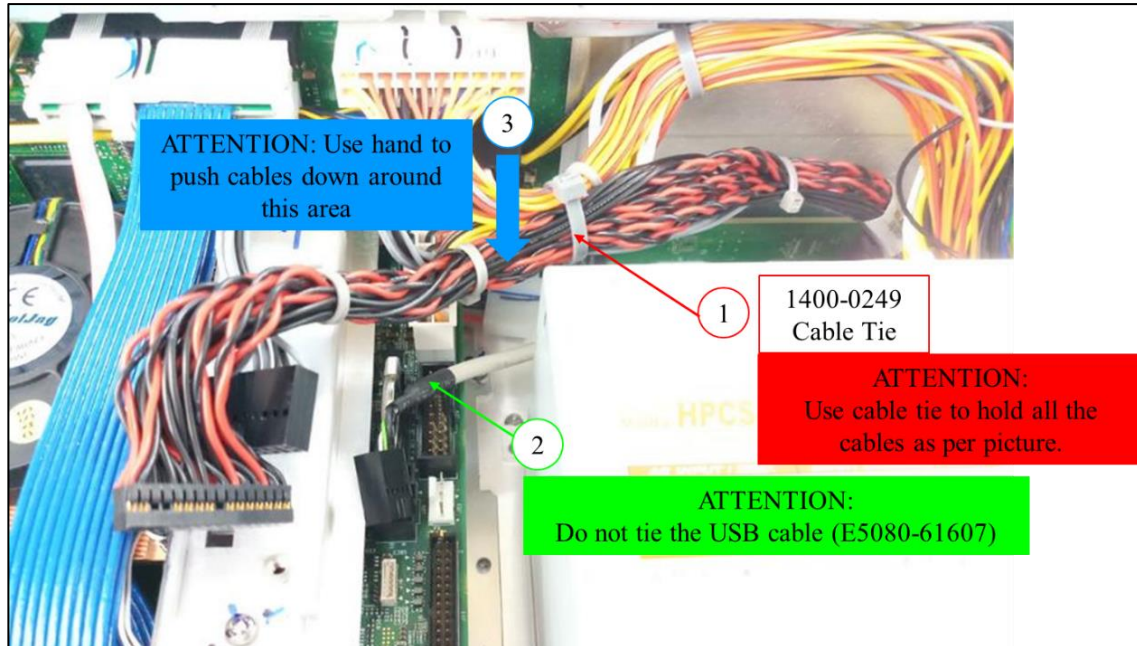
1. Connect CPU power cable, followed with backplane connectors.



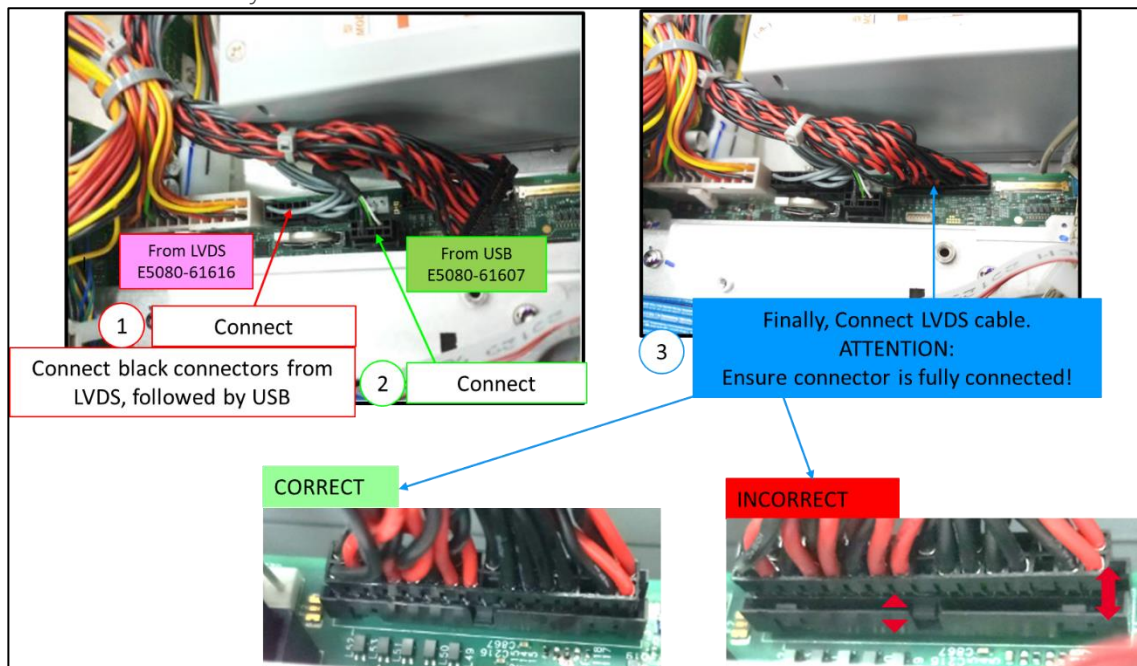
2. Apply the cable tie as shown.



3. Apply the cable tie to the LVDS cable assembly. Push the cables downward.
Note: DO NOT tie the USB cable.

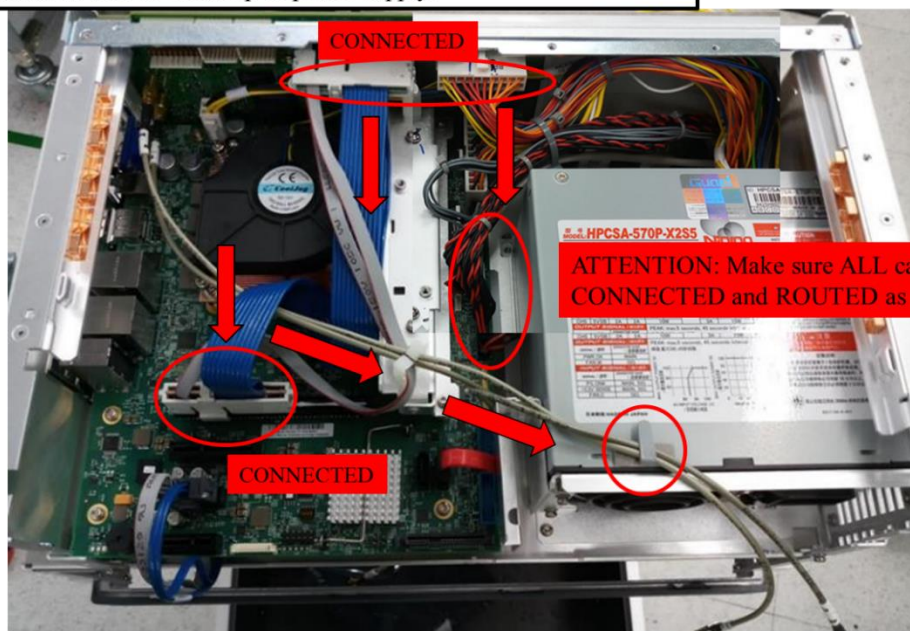


4. Connect the USB cable. Finally, connect the LVDS cable to the motherboard connector. Ensure that it is fully connected.



5. Ensure the cables are fully connected and routed as shown.

Note: The condition of the cable connection and routings will be as follows as viewed from top of power supply.



~End~

Revision History:

| Date | Service Note Revision | Author | Reason for Change |
|-------------|-----------------------|--------|---|
| 4-Sep-2019 | E5080B-01 | ls | As Published |
| 20-May-2021 | E5080B-01A | ls | Added LVDS Cable assembly replacement requirement |