

E7340A-01

S E R V I C E N O T E

Supersedes:
None

E7340A Network Analyzer System

Serial Numbers: US00000000/US99999999

Spare parts for the controller and mm heads of the 8510XF (includes all associated models, upgrades, and most accessories) may not be available after April 1, 2009, when service support ends. This Service Note provides information on frequently failed parts so that customers can stockpile parts they may need in the future.

Parts Required:

P/N	Description	Qty.
-----	-------------	------

None – see list of frequently failed parts on next page.

ADMINISTRATIVE INFORMATION

SERVICE NOTE CLASSIFICATION:	
INFORMATION ONLY	
AUTHOR: MR	PRODUCT LINE: WN
ADDITIONAL INFORMATION: Created 5/14/08. An identical Service Note was written for the E7350A.	

© AGILENT TECHNOLOGIES, INC. 2008
PRINTED IN U.S.A.

May 19, 2008

Rev. 14

**Agilent Technologies**

Page 1 of 4

Situation:

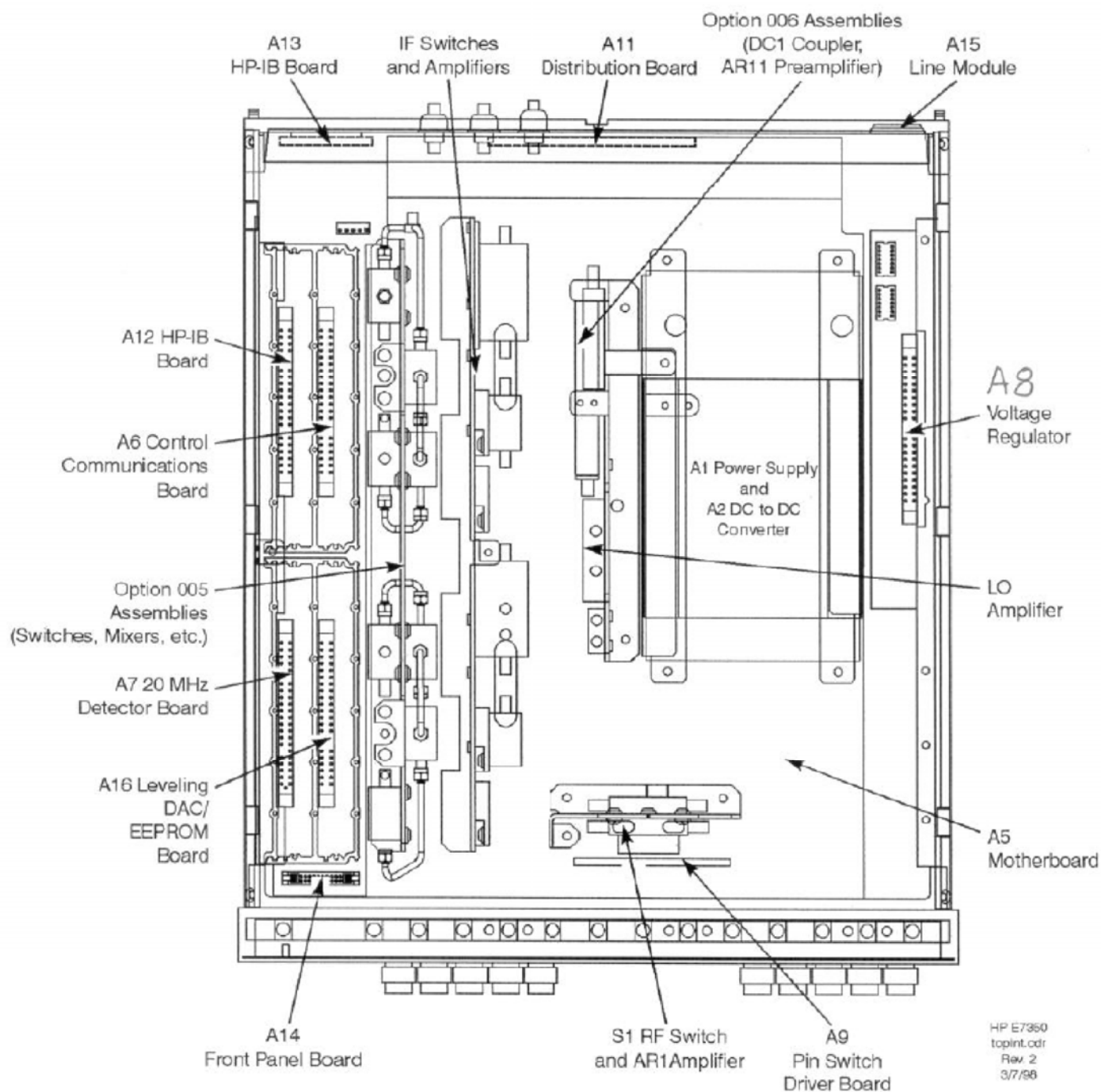
Service support for the 8510 and 8530 family of network analyzers will end April 1, 2009. This product family includes all associated models, upgrades, and most accessories. Beyond April 1, 2009, Agilent will support the obsolete product family on a “best effort” basis only.

Solution/Action:

This Service Note provides information on the frequently failed parts in the controller and mm heads of the 8510XF. Customers may want to buy spare parts now, since they may not be available after April 1, 2009.

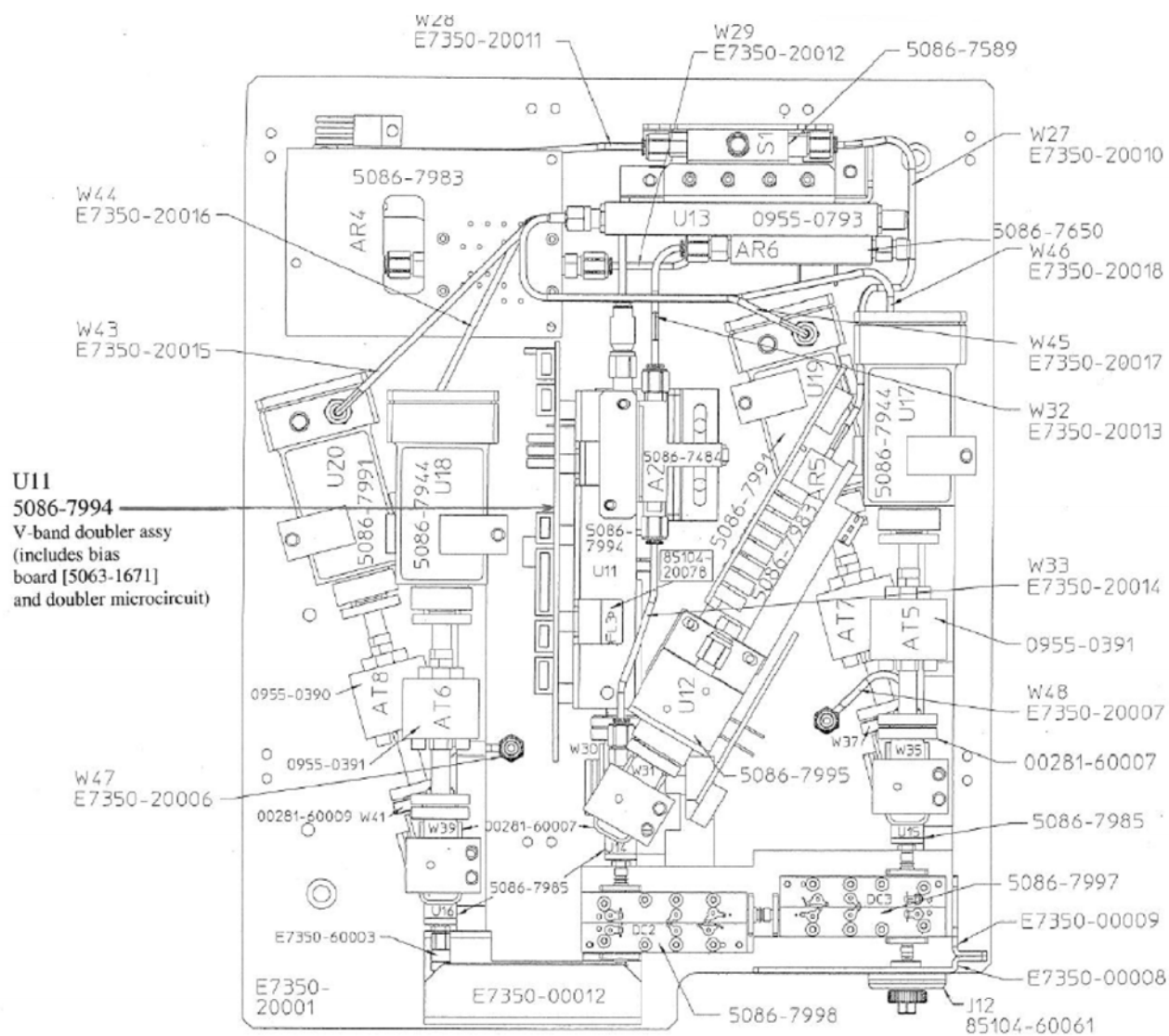
The following list of frequently failed parts comes from 8510XF return to factory (RTF) repair data accumulated over five years. The parts with high failure rates are high power amplifiers, switches, and board assemblies in the MM controller and MM Heads.

MM Controller	Part Number	Price	Reference
Amplifiers:	**	**	8510XF Manual, part # E7350-90001, page 5-27:
AR1	5086-7650	\$3,216	E7350 block diagram 3 of 3
AR6	0955-0612	\$804	E7350 block diagram 3 of 3
AR12	0955-0612	\$804	E7350 block diagram 3 of 3
AR13	0955-0612	\$804	E7350 block diagram 3 of 3
Switches:	**	**	8510XF Manual, part # E7350-90001, page 5-27:
S1	85332-60005	\$3,398	E7350 block diagram 3 of 3
S2	0955-0778	\$303	E7350 block diagram 3 of 3
S3	0955-0778	\$303	E7350 block diagram 3 of 3
S4	0955-0778	\$303	E7350 block diagram 3 of 3
S5	0955-0778	\$303	E7350 block diagram 3 of 3
Board Assemblies:	**	**	8510XF Manual, part # E7350-90001, page 6-10:
A6, Control Communication Board	E7340-60014	\$186	Figure 6-2, Assembly location (see page 3 in this Service Note)
A7, 20 MHz Detector Board	E7340-60015	\$1,336	Figure 6-2, Assembly location (see page 3 in this Service Note)
A8, Regulator Board	E7340-60016	\$606	Figure 6-2, Assembly location (see page 3 in this Service Note)
A12, GPIB-XF Board	E7340-60103	\$591	Figure 6-2, Assembly location (see page 3 in this Service Note)
A16, Leveling DAC Board	E7340-60094	\$303	Figure 6-2, Assembly location (see page 3 in this Service Note)
MM Heads (Left & Right Head are same)	**	**	**
Amplifiers:	**	**	8510XF Manual, part # E7350-90001:
AR1	5087-7016	\$2,171	E7350 block diagram 2 of 3, page 5-25
AR4	5086-7983	\$2,063.37	E7350 block diagram 1 of 3, page 5-23
AR5	5086-7983	\$2,063.37	E7350 block diagram 1 of 3, page 5-23
AR6	5086-7650	\$3,216	E7350 block diagram 1 of 3, page 5-23
Switches:	**	**	8510XF Manual, part # E7350-90001:
S1	5086-7589	\$2,172	E7350 block diagram 1 of 3, page 5-23
Board Assemblies:	**	**	**
Bias Board Assembly (see note below)	5063-1671	\$96.20	See graphic of MM Head on page 4 in this Service Note
Note: U11, 5086-7994, V-band doubler includes Bias Board & Doubler assembly.			
Doubler assembly rarely fails but the bias board attached to it has high failure rate.			



HP E7350
topint.cdr
Rev. 2
3/7/98

Figure 6-2 Assembly Locations within the Controller



layout_mmsub2

E7350-60001

Bottom half of MM head