

N1911A-05

S E R V I C E

N O T E

Supersedes:
NONE

N1911A - P-Series Single Channel Power Meter

Serial Numbers: ALL

Repair Flow for 1mW Power Reference failure

Parts Required:

P/N	Description	Qty.
N1911-61001	Calibrator Assembly	1

ADMINISTRATIVE INFORMATION

SERVICE NOTE CLASSIFICATION:	
INFORMATION ONLY INTERNAL ONLY DOCUMENT	
<input checked="" type="checkbox"/> Calibration Required <input type="checkbox"/> Calibration NOT Required	PRODUCT LINE: WC AUTHOR: CTK
ADDITIONAL INFORMATION:	

© AGILENT TECHNOLOGIES, INC. 2013
PRINTED IN U.S.A.

March 26, 2013

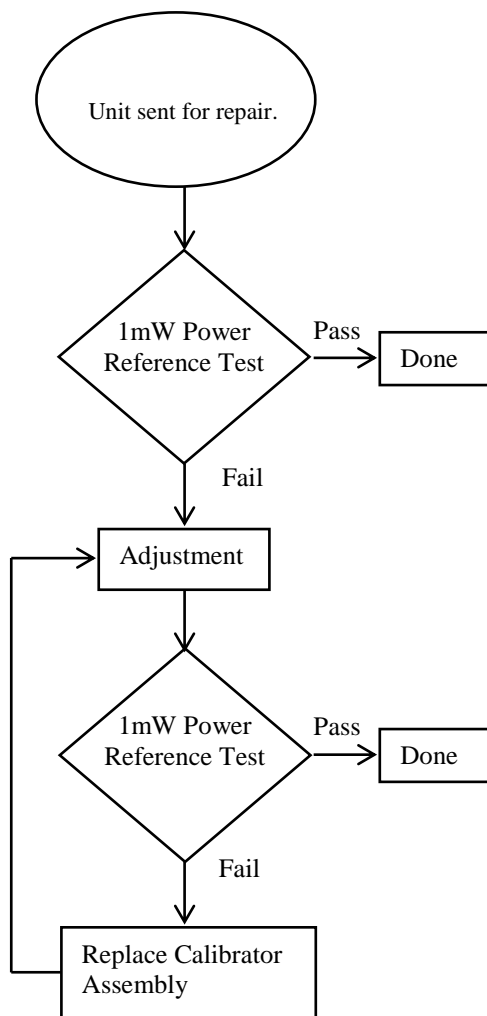
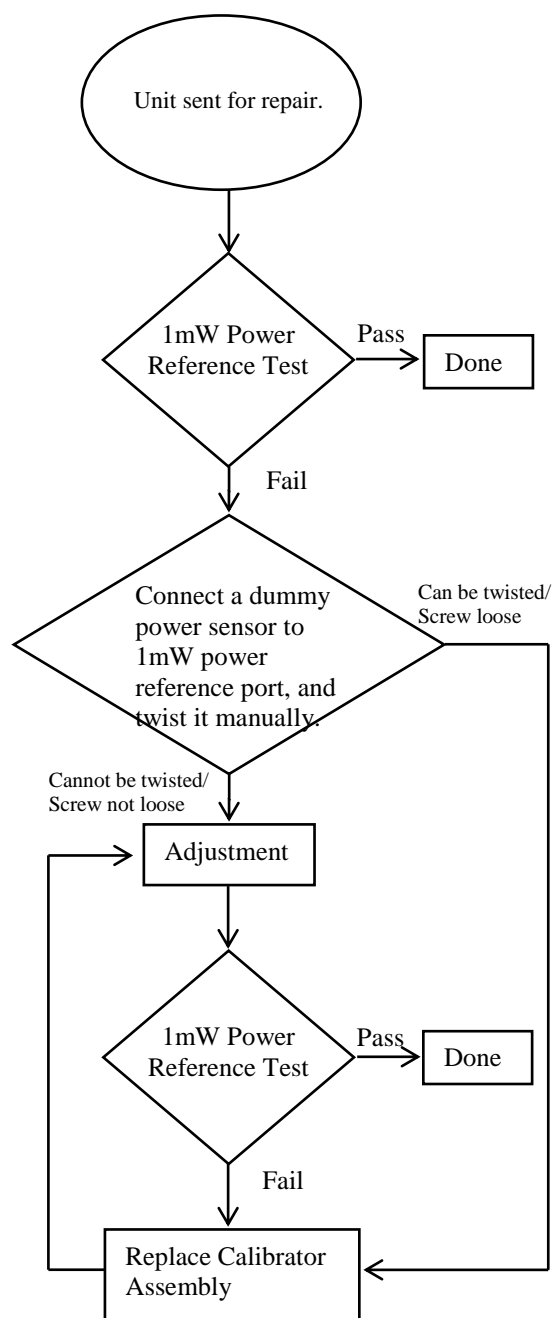
Rev. 21



Agilent Technologies

Situation:

A revised repair process is introduced to check for N1911-61001 calibrator assembly loose screw (Item 6 on Figure 1).

Solution/Action:**Current Repair Flow****New Repair Flow**

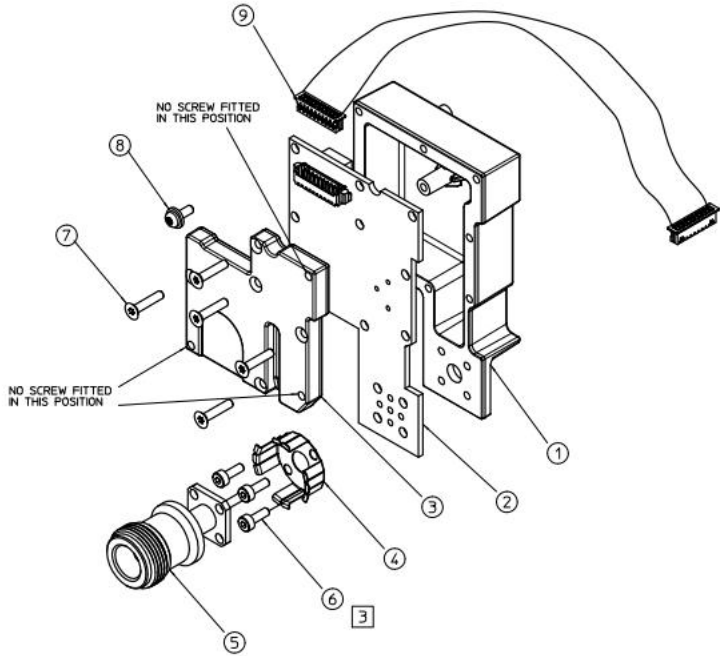


Figure 1 : N1911-61001 Mechanical Drawing