

U1253B-10

Information Only Service Note

Supersedes:
NONE

U1253B Handheld Digital Multimeter, 4½ Digit, OLED Display

Serial Numbers: ALL

The Problem – Instructions to replace the OLED (Organic LED) display board for U1253B.

Parts Required:

P/N	Description	Qty.
U1253-66007	Display Board, U1253B	1

ADMINISTRATIVE INFORMATION

☐ Calibration Required
☒ Calibration NOT Required

PRODUCT LINE: GM
AUTHOR: WY

ADDITIONAL INFORMATION:

Situation:

Once you find that the OLED display of your Handheld Digital Multimeter (HDDMM) is dimmer than usual or no display, and there is a beeping sound, replacing the OLED display board will solve the problem.

If the beeper was disabled previously, you may connect your HDDMM to a PC by using an IR-USB cable (U1173B), to check whether the unit can be detected by the Keysight Handheld Meter Logger software. If the PC can detect the HDDMM, replacing the OLED display board will bring back the bright display.

Follow the instructions below to replace the OLED display board.

Solution/Action:

1. Turn the knob of the rotary switch to OFF and disconnect the test leads.



2. Wear clean, dry gloves and avoid touching any components except the OLED display board.

3. Loosen the 2 screws on the back of the device by using a Philips screwdriver.



4. Lift the holder and rotate the locking mechanism to remove the battery cover with a flat-head screwdriver. Then, remove the battery cover compartment.



5. Loosen this screw with the same Philips screwdriver.



6. Loosen these 2 screws with the same Philips screwdriver.



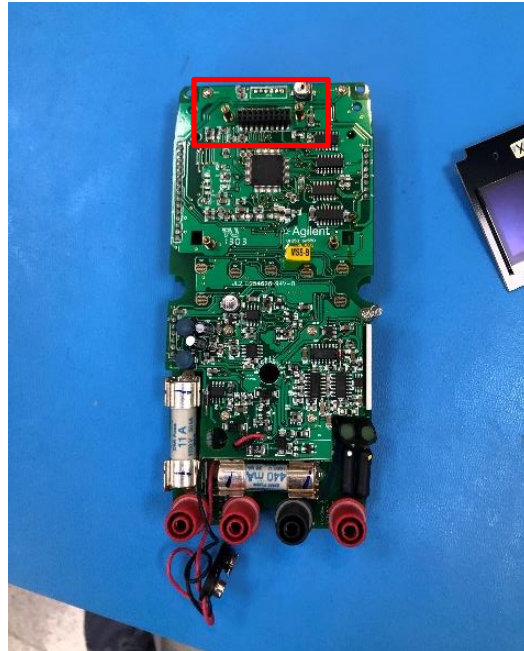
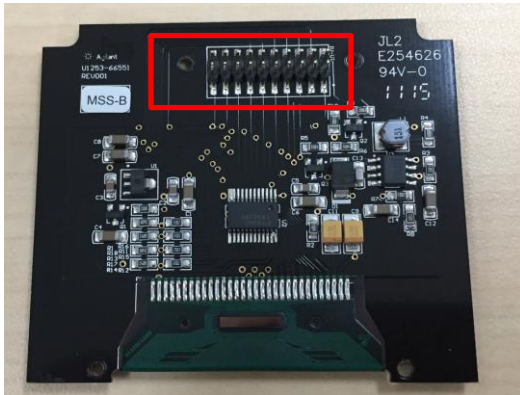
7. Gently lift the board out of the orange casing.



8. Loosen the 4 screws that secure the OLED display board. Then gently pull to remove the OLED display board from the PCA.



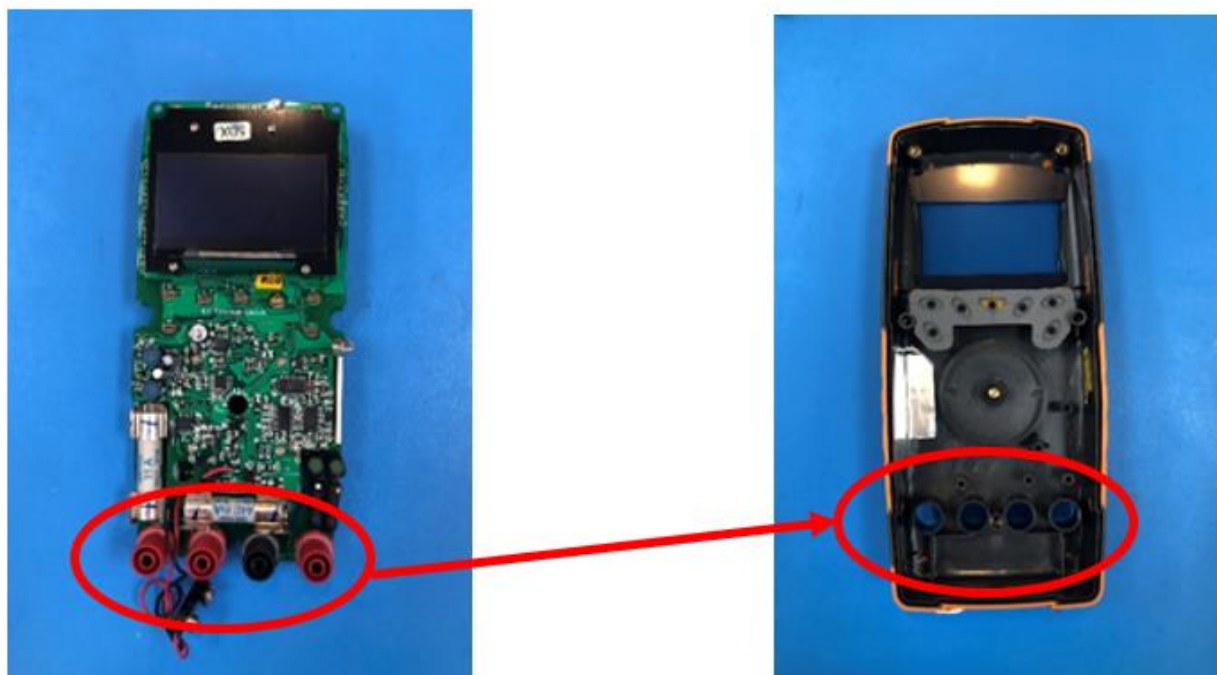
9. Next, align the new display board's connector pins with the PCA connector. Then, install the display board by pushing the connector pins into the connector on the PCA.



10. Install the 4 screws to secure the OLED display board.



11. Place the board back into the orange casing.



12. Install the 2 screws to secure the board.



13. Install the back cover and install the screw near the battery holder.



14. Install the battery cover and use a flat-head screwdriver to lock the battery cover compartment.



15. Install the last 2 screws at the rear cover.



After the OLED display board replacement, turn on your HHDM by and you will notice a bright display.

Revision History:

Date	Service Note Revision	Author	Reason for Change
11 September 19	01	WanYee	As Published